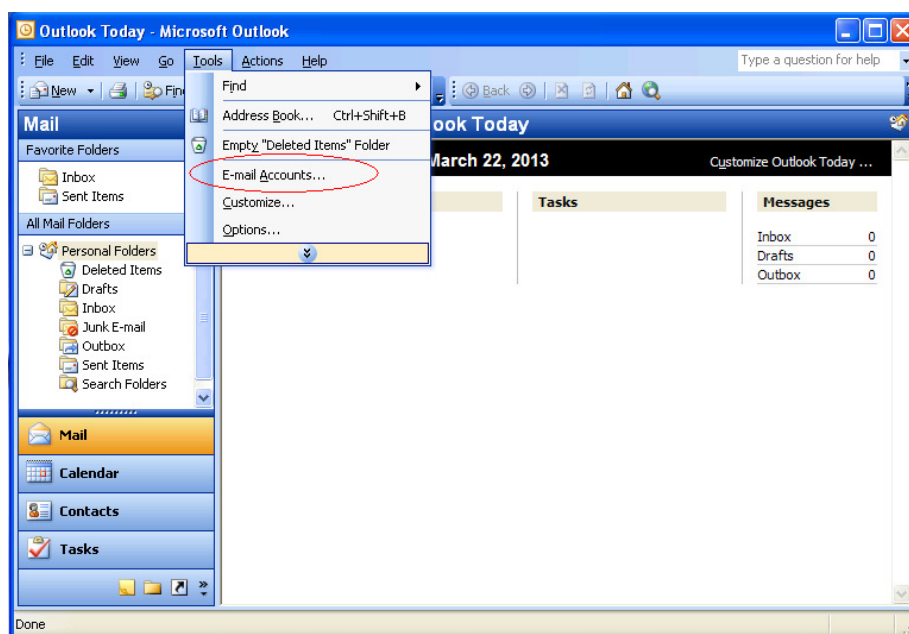


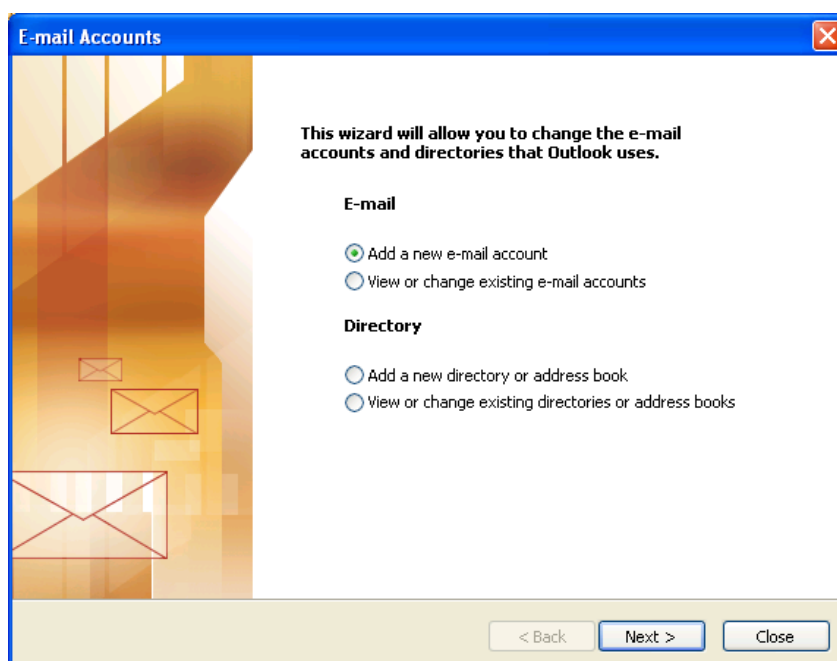
How to Setup Email Account in Outlook 2007 ?

Before setup email in Outlook 2007, please create your email account in Wemail Control Panel. Please refer to "Add New Email Account".

1. Open your Outlook 2007, click Tools -> E-mail Accounts on menu.



2. Choose [Add a new e-mail account] -> then Next



3. Input Your Name, Email Address, and Password for email account discovery

Add New E-mail Account

Auto Account Setup
Clicking Next will contact your e-mail server and configure your Internet service provider or Microsoft Exchange server account settings.

Your Name: WEMail Demo Sales
Example: Barbara Sankovic

E-mail Address: sales@wemailedemo.com
Example: barbara@contoso.com

Password: *****

Retype Password: *****
Type the password your Internet service provider has given you.

Manually configure server settings or additional server types

< Back Next > Cancel

Then, Outlook itself will find the email setting.

Add New E-mail Account

Congratulations!

Configuring

Configuring e-mail server settings. This might take several minutes:

- ✓ Establish network connection
- ✓ Search for sales@wemailedemo.com server settings
- ✓ Log on to server and send a test e-mail message

Your **IMAP** e-mail account is successfully configured.

Manually configure server settings

< Back Finish Cancel

With the discovery service, Outlook will automatically default the mailbox setting as IMAP over SSL (port 995), and SMTP over SSL (port 465).

(Please be noted that SSL connection in some countries are prohibited by law.)