

如何在 Windows Live Mail (Windows 7) 設定電郵地址 ?

在設定 Windows Live Mail 前,須要在 Wemail 控制台內先建立電郵帳戶. 請參考 [新增電郵戶口].

如在 Windows 7 內沒找到 Windows Live Mail, 請下載及安裝 Windows Essentials 以取得 Windows Live Mail.

Windows Essential 可從這處下載 :

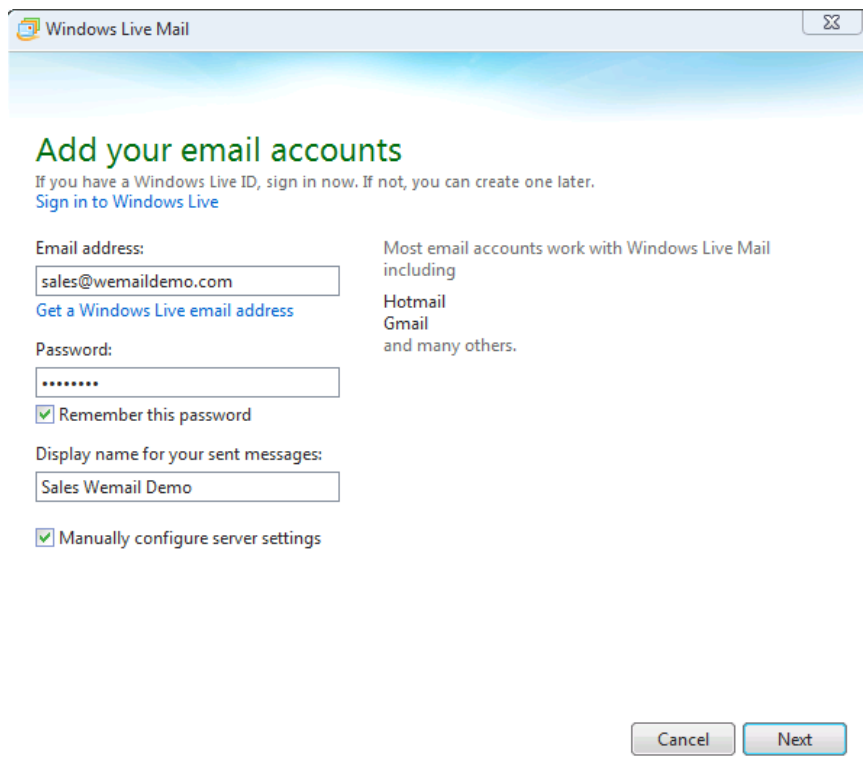
<http://www.microsoft.com/en-us/download/details.aspx?id=3945>

安裝 Windows Live Mail 後,

1. 請打開你的 Windows Live Mail, 如電郵設定精靈沒有彈出來, 請按 "Accounts" -> "Email"



輸入你的電郵地址及密碼, 以及在寄出電郵之顯示名稱. 並選擇 "Manually configure server settings"

A screenshot of the Windows Live Mail 'Add your email accounts' dialog box. The window title is 'Windows Live Mail'. The main heading is 'Add your email accounts' in green. Below it, there is a sub-heading 'If you have a Windows Live ID, sign in now. If not, you can create one later.' and a link 'Sign in to Windows Live'. The form contains several fields: 'Email address:' with the value 'sales@wemaildemo.com' and a link 'Get a Windows Live email address'; 'Password:' with a masked password '*****' and a checked checkbox 'Remember this password'; 'Display name for your sent messages:' with the value 'Sales Wemail Demo' and a checked checkbox 'Manually configure server settings'. To the right of the form, there is text: 'Most email accounts work with Windows Live Mail including Hotmail Gmail and many others.' At the bottom right, there are two buttons: 'Cancel' and 'Next'.

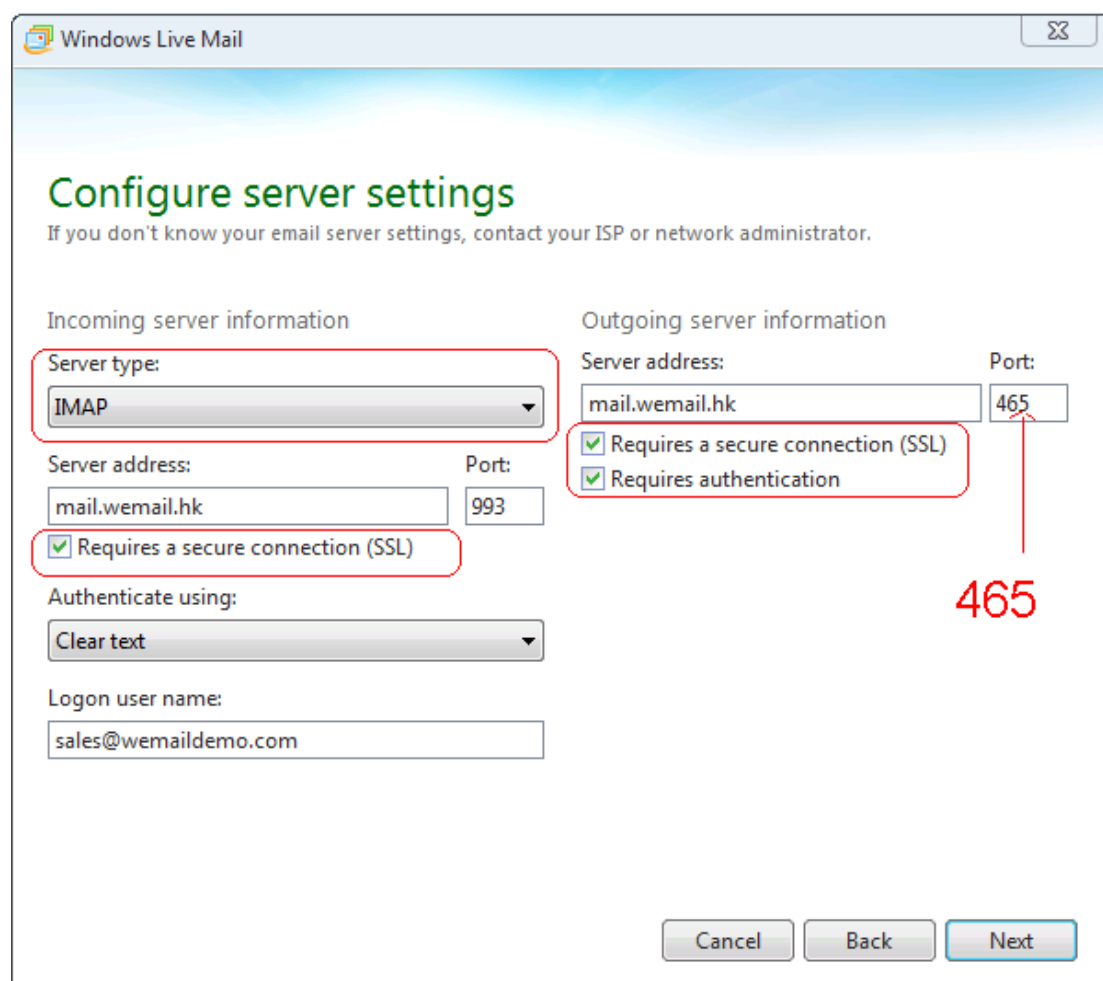
2. 選擇 [Server type] POP or IMAP ->

Incoming and outgoing server address = "mail.wemail.hk" ->

選擇 "Requires a secure connection (SSL)" ->

login username 必須是你的電郵地址 ->

outgoing server port number 改為 465



Outgoing mail (SMTP) port: 587 or 465 (SSL)

Incoming (POP3) port: 110 or 995 (SSL), 或,

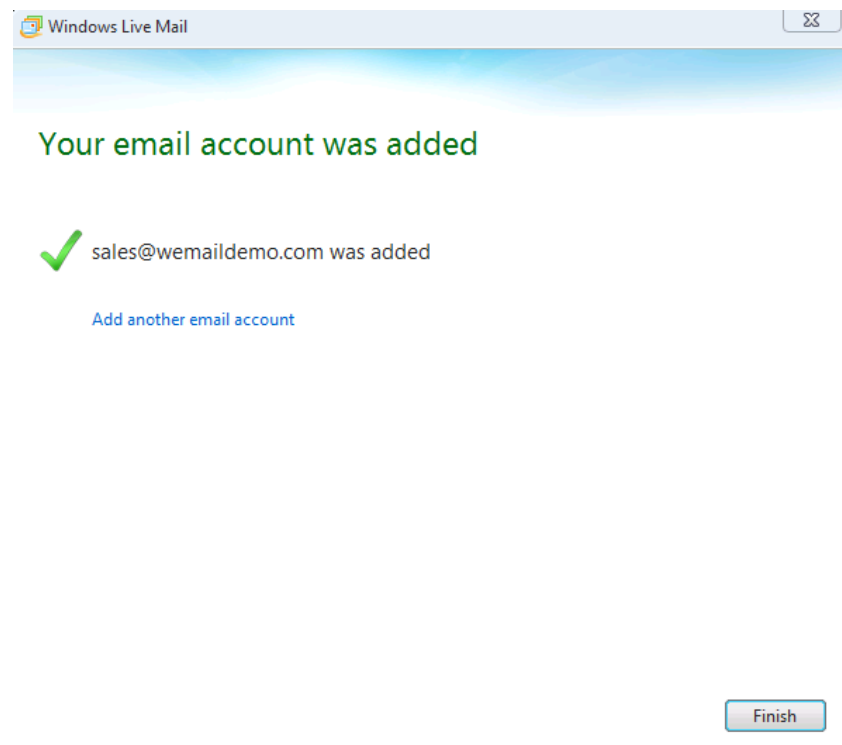
Incoming (IMAP) port: 143 or 993 (SSL)

3. 選擇 POP3 或 IMAP

POP3 - 電郵將會下載至你的電腦, 並節省寄存帳戶之空間.

IMAP - 電郵將保留在寄存帳戶之空間, 用已設定帳戶之電腦 / 智能電話或 IPAD 等都可瀏覽電郵. 但你將須要更多電郵寄存空間以儲存電郵.

4. 按 [Finish] 完成.



最後請發送一封電郵給自己, 以便測試外寄及接收連線.